

Name: Chrissi Date: March 2012 Truck / City: Teede / Gran Canaria Event: ETs rd-3 2012

Front Suspension

Upper Spacer: 2.5 mm (1,2,3,4,5,6,7,8)

King Pin: Standard UM128

Upper Spacer: 0.5 mm

Knuckle Spacer: Upper Lower

Wheel Spacer: 1 mm

Knuckle: TF227(SP/Std.) TF224

Drop: A B 6 mm

Swing Shaft: TF242(SP/Std.) TF221

Sus. Holder Bush: Front C In/Out 1 mm Rear C In/Out 1 mm

Sus. Holder Spacer: 1 mm

Sus. Arm: TF005H(Std.) TF226H

Sway Bar Holder: Plastic(SP/Std.) Aluminum(TFW110)

Upper Rod Position: TF240/241(SP/Std.) TF207/208

Drive Hub: TFW113(4.0) LAW30R(4.5/Std.) TFW031(5.2)

Diff. Position:

Sus. Arm Spacer: Front: 2 mm Rear: 1 mm

Knuckle Spacer: 1 mm

Ride Height: 4.8 mm

Sway Bar: 1.4 mm

Toe Angle: -0.5 °

Front Diff.: Spool One Way Diff

Camber Angle: 2 °

Notes: Sway Bar holder cutted.

Rear Suspension

Upper Spacer: 1.75 mm (1,2,3,4,5,6,7)

Upper Spacer: 0.3 mm

Wheel Spacer: 1 mm

Drive Hub: TFW113(4.0) LAW30R(4.5/Std.) TFW031(5.2)

Drop: A 4.5 mm B

Sus. Holder Bush: Front E IN/OUT 0.75 mm Rear C IN/OUT 0.75 mm

Sus. Holder Spacer: 0.75 mm

Sus. Arm: TF005H(Std.) TF226H

Sway Bar Holder: Plastic(SP/Std.) Aluminum(TFW110)

Upper Rod Position: TF240/241(SP/Std.) TF207/208

Sus. Arm Spacer: Front 2 mm Rear 1 mm

Diff. Position:

Ride Height: 5.0 mm

Sway Bar: 1.2 mm

Rear Diff.: Gear(SP/Std.) Ball

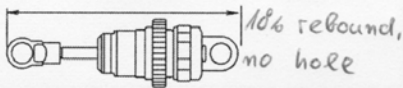
Hub Carrier Spacer: Front 1 mm Rear 1 mm

Camber Angle: 2 °

Notes: Dot 3 in gear diff sway bar holder cutted.

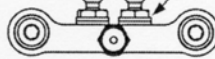
Shock

	Front	Rear
Shock Oil:	<u>MU #400</u>	<u>#400</u>
Shock Spring:	<u>HB silver</u>	<u>silver</u>
Diaphragm:	<u>std</u>	<u>std</u>
Pressure Form:	<u>none</u>	<u>none</u>
Shock Length:	<u>65</u> mm	<u>65</u> mm



Steering Wiper

Steering Spacer: 1 mm



Crank arm: TF239(SP/Std.) TF216

Chassis

Center Plate: On Off

Weight: 10 g

Weight: 20 g

Weight: 9 g

Weight: 9 g

Upper Plate: TF235(SP/Std.) TF233

Chassis: TF234(SP/Std.) TF232

Tire

Tire	Comments
<u>Ride 32</u>	-----
<u>Ride orange</u>	-----
<u>Ride</u>	-----
Traction Compound	1st: _____ 2nd: _____

Others

Motor: Orion 4.5

Pinion/Spur: 116 / 27 Gear Ratio: 7.87

Battery: Orion ESC: Orion

Body: LTC-R Wing: UR33

2nd Gear Ratio: 1.83

Track Condition

Smooth Asphalt

Bumpy Concrete

Low Traction Carpet

Med. Traction Indoor

High Traction Outdoor

Comment: overall weight, 1390g.